

## UNDERGROUND EQUIPMENT

### CONDUIT & MANHOLE CABLE GUIDES



<b>CS-028</b>	Conduit Slipper Guide small conduits and sub duct.
<b>CS-035</b>	Conduit Slipper Guide 35mm sub duct and conduit.
<b>CS-050</b>	Conduit Slipper Guide 50mm conduits
<b>CS-080</b>	Conduit Slipper Guide 80mm conduits
<b>CS-100</b>	Conduit Slipper Guide 100mm conduits
<b>CS-125</b>	Conduit Slipper Guide 125mm conduit
<b>CS-150</b>	Conduit Slipper Guide 150mm conduit.

Cable Slippers are the lead in cable guides of choice. They are robust and economical.



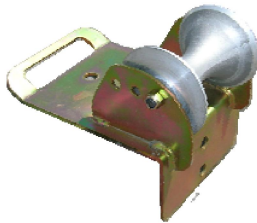
**PMCG-100** Pivoting manhole cable guide 100mm slipper

Manhole cable guide which uses a slipper instead of rollers and is less expensive than the roller types below.



**PMRG-080** Pivoting manhole guide with 3x100mm aluminium rollers  
**PMRG-140** Pivoting manhole guide with 3x140mm aluminium rollers

Pivoting triple roller cable guide for cables up to 100mm Ø. The pivoting allows the rollers to centre themselves with angle of the cable. There is a PMRG-100 that will take cables up to 140mm Ø



**TRGM-100**



**TRGM-100/2**



**TRGM-100/3**

These Manhole roller guides can sit either on top of the manhole edge or even be set up in the manhole for corner pulls. The rollers will withstand 1.3Tonnes and come with sealed bearings.

Illustrated here is a standard TRGM-100/3 modified for:-



On the left it has been provided with two hangers to attach the roller guide to a cable tray

On the right it has been modified to hang upside down on the manhole opening.

**This ability to manufacture any type of adaption is what sets our company apart from our competitors!**



## UNDERGROUND EQUIPMENT

### FS SERIES ROLLER GUIDES



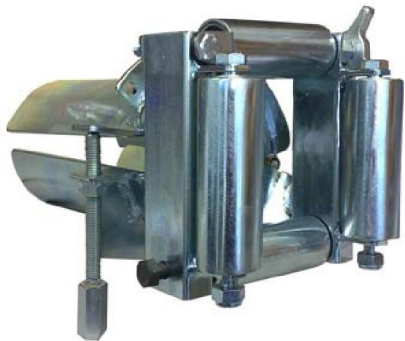
**IFS-080** In-line feeding slipper for 80mm conduit

**IFS-100** In-line feeding slipper for 80mm conduit

**IFS-125** In-line feeding slipper for 80mm conduit

**IFS-150** In-line feeding slipper for 80mm conduit

In - line feeding slippers for lead-ins at intermediate man-holes.



**FS100-4R** Quad roller guide for 100mm conduit

**FS125-4R** Quad roller guide for 125mm conduit

**FS150-4R** Quad roller guide for 150mm conduit

The quad roller is a multi directional roller guide with one roller hinged for removal from the cable and the conduit. The sheave has the added benefit of being able to lock the guide into the conduit.



**FS-050** Single roller guide to fit 50mm conduit

**FS-080** Single roller guide to fit 80mm conduit

**FS-100** Single roller guide to fit 100mm conduit

**FS-125** Single roller guide to fit 125mm conduit

**FS-150** Single roller guide to fit 150mm conduit

**FS-200** Single roller guide to fit 200mm conduit

The single roller guide has a lockable sheath and an aluminium roller with two sealed bearings. They range in size to fit 50mm to 200mm conduit.



**FS100-4A90** Suits 100mm conduit

**FS125-4A90** Suits 125mm conduit

**FS150-4A90** Suits 150mm conduit

Lockable angled guiding rollers for manholes are set at 90° with a radius of 450mm. Suitable for directional changes within a manhole. The support frame rests against the wall offering added strength if the pull requires it.

**\*\*Other conduit sizes and radiuses are available.\*\***

## **UNDERGROUND EQUIPMENT**

### **TRENCH ROLLERS**



**NTRA-120** Flat trench roller guide with 140mm aluminium roller

A durable trench roller guide that can also be turned on its side for corner pulls. It has a 125kg SWL aluminium roller which comes standard with sealed bearing. The roller is placed behind the direction of pull and is offset from centre to reduce the possibility of the roller tipping forward during pulling operations.



**NTR-120** Flat trench roller guide with 140mm plastic roller

Similar to the one above and has a plastic roller. Its rating is also 125kg but that's a WLL. The roller will take cables up to a diameter of 150mm. The roller is placed behind the direction of pull and is offset from centre to reduce the possibility of the roller tipping forward during pulling operations



**RTRA-140** Raised trench roller guide with 140mm aluminium roller

This trench roller guide will accommodate cables up to a diameter of 150mm and the roller is rated at 125Kg SWL. Like its predecessors the roller is placed behind the direction of pull and is offset from centre to reduce the possibility of the roller tipping forward during pulling operations. The frame may be altered for use on its side when pulling the cable around corners



**RTR-140** Raised trench roller guide with 140mm plastic roller

This trench roller guide is the same as the RTRA above but with a plastic roller. The unique feature of the RTR is if you are laying two cables one on top of the other this style will allow you to run the bottom cable first and by removing the roller guide and placing it over the top of the existing cable you are able to pull the other cable into position.



**TRC60-230** 1 Tonne Trench Corner Roller Guide

This is the ultimate for pulling cables around corners in trenches, manholes and on cable trays. The securing rings are sized to take a standard star picket which when topping the trench can be tied off to another picket at ground level for added strength. (Similar to straining a corner post on a fence.) The twin vertical rollers allow you to pull your cable from either direction without the pulling rope wearing on the guide frame. 5 to 7 frames are generally needed for a 1200mm radius.

## UNDERGROUND EQUIPMENT

### CONDUIT CLEANERS



- DPM-040** Duct Proving Mandrel for 50mm conduits
- DPM-050** Duct Proving Mandrel for 63mm conduits
- DPM-075** Duct Proving Mandrel for 80mm conduits
- DPM-095** Duct Proving Mandrel for 100mm conduits
- DPM-120** Duct Proving Mandrel for 125mm conduits
- DPM-140** Duct Proving Mandrel for 150mm conduits

**Proving Mandrels** are used to test the circular integrity of a duct after back filling. A draw rope is first either blown into the conduit with air or pulled in using a fibre rod. Once attached the mandrel is pulled back through the conduit to ensure it has not been squashed. It is important to attach another draw line to the other end so if it gets stuck it can be pulled back out again. They range in sizes from 40mmOD to 140mm OD.



- WBC-050** Wire brush cleaner for 50mm conduits
- WBC-080** Wire brush cleaner for 80mm conduits
- WBC-100** Wire brush cleaner for 100mm conduits
- WBC-125** Wire brush cleaner for 125mm conduits
- WBC-150** Wire brush cleaner for 150mm conduits
- WBC-180** Wire brush cleaner for 180mm conduits

**Conduit Wire Brushes** are used to clean the inside of the duct from oxidized materials caused by lime or cement based material seeping through the joints. They will also remove a small amount of soil. They are manufactured from 225g wire and come in sizes from 50mm OD to 180mm OD.



- CRC-050** Conduit rubber cleaner for 50mm conduits
- CRC-080** Conduit rubber cleaner for 80mm conduits
- CRC-100** Conduit rubber cleaner for 100mm conduits
- CRC-125** Conduit rubber cleaner for 125mm conduits
- CRC-150** Conduit rubber cleaner for 150mm conduits
- CRC-180** Conduit rubber cleaner for 180mm conduits

**Conduit Rubber Cleaner** like the mandrels the conduit must have a draw line installed first for the cleaner to be pulled through, removing soil and gravel before it, as it is pulled through the length of the conduit run. There are 5 sizes of conduit rubber cleaners from 50mm to 180mm OD.



- RS-050** Rubber Slug spreader for 50mm conduits
- RS-080** Rubber Slug spreader for 80mm conduits
- RS-100** Rubber Slug spreader for 100mm conduits
- RS-125** Rubber Slug spreader for 125mm conduits
- RS-150** Rubber Slug spreader for 150mm conduits

**Rubber Slug** is used to spread lubricant down a conduit. They come in sizes from 50mm to 150mm diameter. They can also be used as a cleaner as well if the distance to be cleaned is short.