

RAYCHEM CABLE CLAMPS

Quick Reference Guide

WHAT MAKES RAYCHEM CABLE CLAMPS THE INDUSTRY LEADER?

Integral stainless steel clamping plates to ensure consistent clamping pressure on both sides.

Range taking elastomeric inserts, minimise stock holdings, yet maximise performance

Range accepts cable diameters from 26 - 106mm (more coming soon)

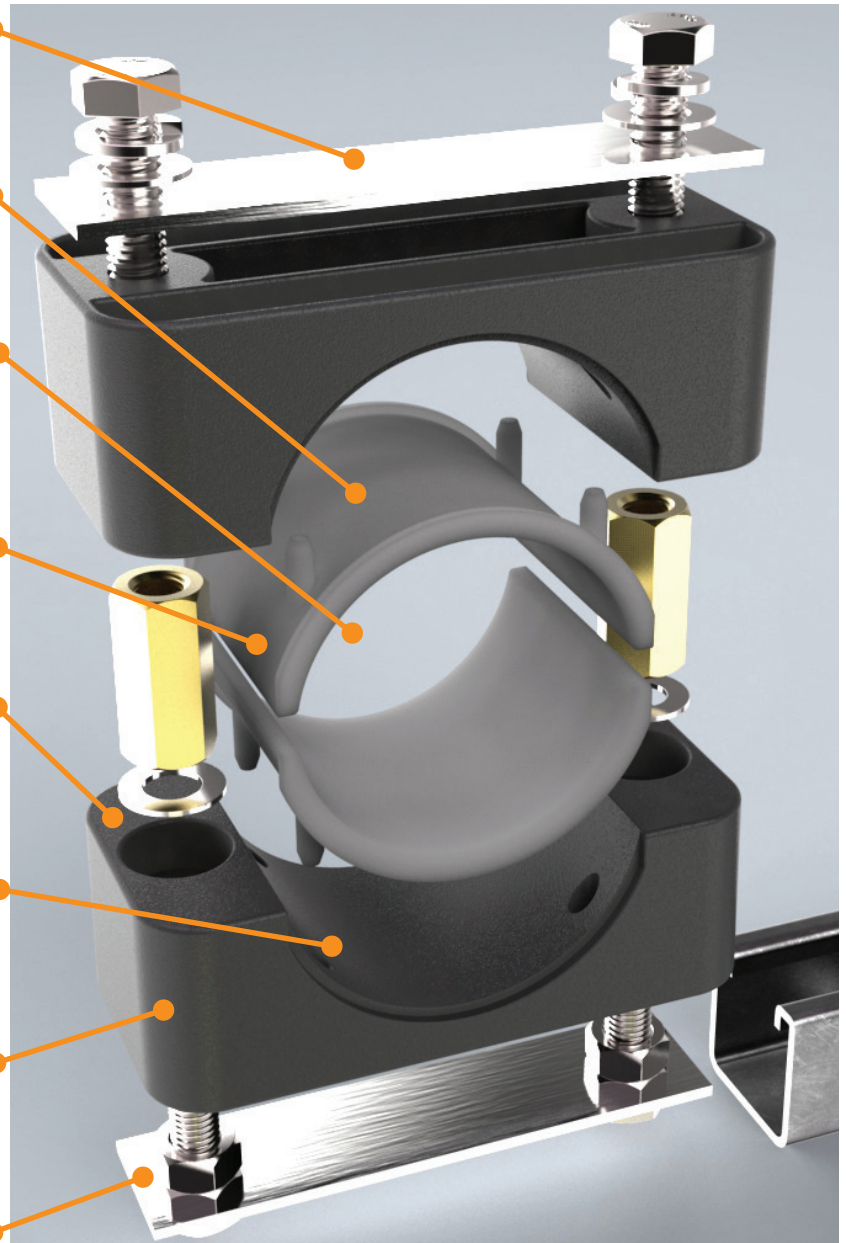
Elastomeric inserts can accommodate round, oval or "tri-round" cable profiles

Bottom half of clamps can be mounted, prior to cable fitment

Can be used without inserts in an emergency, to increase the clamping range

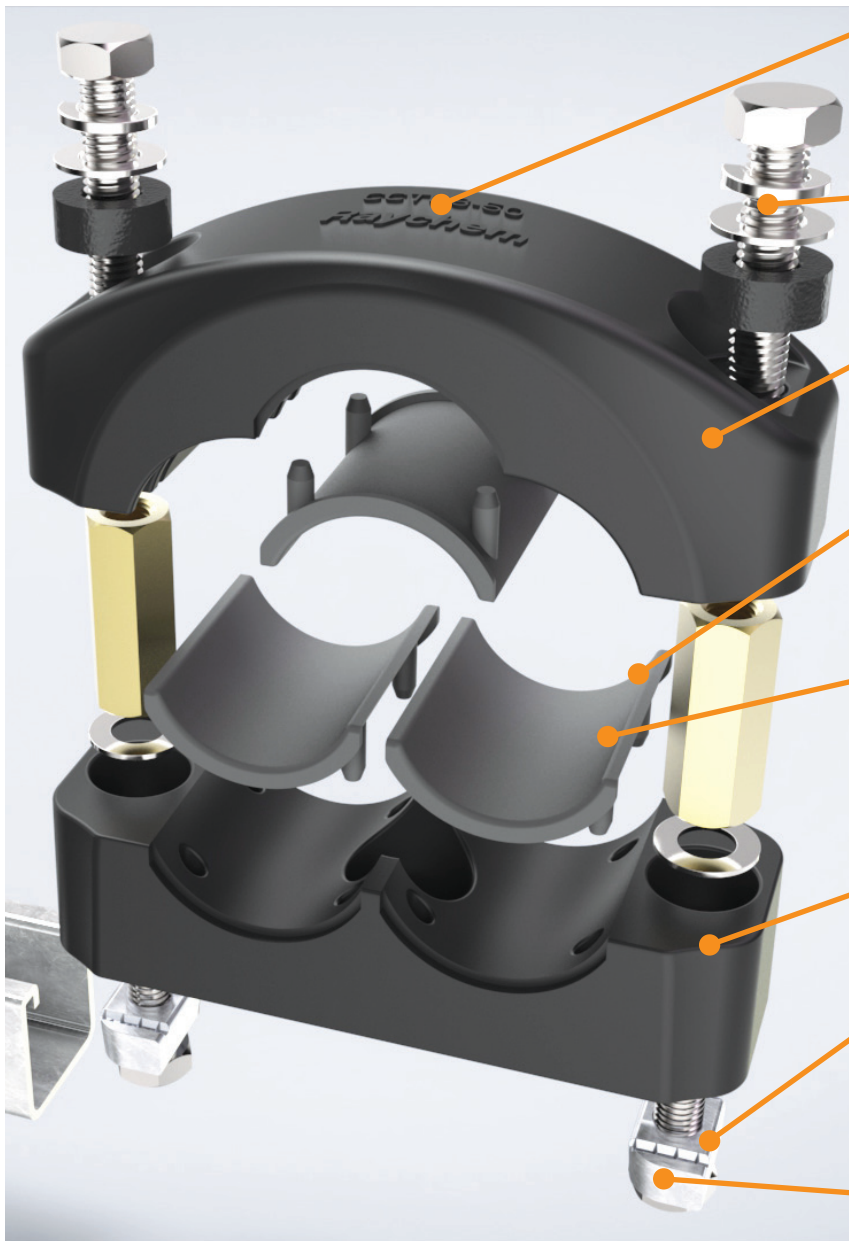
Impact resistant, Halogen free, UV Stabilised materials

Patented slider plate design, maximises clamp performance, when under shock load



Designed and independently tested to meet all requirements of IEC61914

Raychem cable clamps have a patented design which optimises clamping force at both the attachment point, and the cable by securing each clamp half separately. Cables can be aligned and located in the bottom half of the clamp prior to final tightening.



Easy product identification. Smooth aesthetics which improve overall strength while in operation

Optimised for harsh environments with stainless steel hardware

Self-extinguishing, UV stabilised, polymer materials

Range accepts cable diameters from 26-38mm, 38-50mm & 50-60mm

Captive elastomeric inserts for increased cable protection and containment

Can be used as a dual cable clamp or stacked

Can be mounted using centre bolt or 2 bolts at extremities

Available in slider plate and strut nut configurations